



OPTION AUDIO

CONTACT  
Andrew Speelmeyer  
Commercial Sales Manager  
(07) 3805 5112  
0413 484 398

# INDUSTRIAL

## BENEFITS

- ▶ Reduce Insurance Premiums
- ▶ Great value for money
- ▶ Avoid expensive accidents
- ▶ Easy to Use
- ▶ Ensure the safety of you and your surroundings

## REVERSE CAMERA PACKS



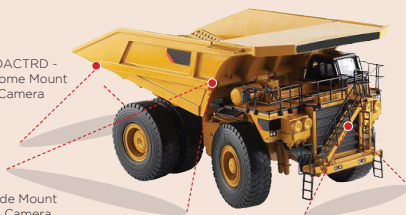
1 x Rear Mount Camera

◀OA7C  
2-Way Reverse Camera System  
(Industrial/ Commercial)

### FEATURES

- Screen:
- 7" Robust Screen
  - Dual AV Input (Including dual camera capability)
- Camera:
- Heavy-duty, alloy housing
  - Adjustable gimble
  - High quality, CCD colour lens
  - IP 66
  - PAL/ NTSC
  - 628x582 / 628x512
  - Operating Temp.: -20°C to +70°C

OACTRS/OACTRD - Square or Dome Mount Reverse Camera



OASM Side Mount Reverse Camera

OACTRS/OACTRD - Square or Dome Mount Reverse Camera

OA485CS▶  
4-Way Reverse Camera System  
(Industrial/ Commercial)

### FEATURES

- 9" Screen
  - Four AV Input (Including four camera capability)
  - Screen displays multiple views
  - Dash Mount
  - Camera features night vision, adjustable gimble, heavy-duty housing and \*microphone
- (\*only on rear mount cameras)



2 x Side Mount Cameras

1 x Rear Mount Cameras

### OACTRS

CCD Square Mount Camera



### OACTRD

CCD Dome Mount Camera



REVERSE CAMERAS

### FEATURES

- Heavy-duty, alloy housing
- Adjustable gimble
- High quality, CCD colour lens
- IP 66
- PAL/ NTSC
- Pixel: 628x582 / 628x512
- Operating Temp.: -20°C to +70°C

### Not sure what you need?

Contact Option Audio today to discuss your requirements. We can tailor a package to suit your specific needs and at a cost that meets your budget!

Full range at [www.optionaudio.com](http://www.optionaudio.com)